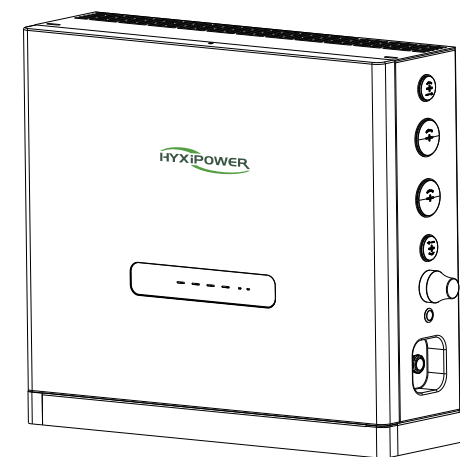
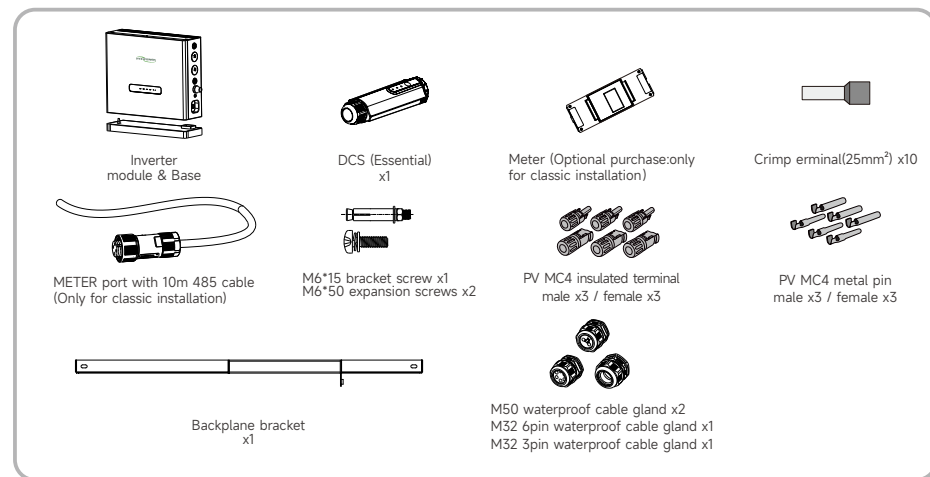


# STACKABLE ALL-IN-ONE ESS

HYX-H6K-HTA / HYX-H9K-HTA /  
HYX-H12K-HTA / HYX-H15K-HTA



## 1 Packing list

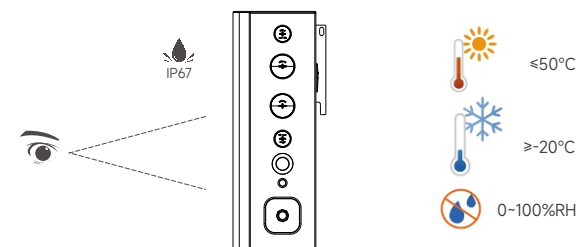


### NOTES

Inverter Module and Base in the same package

## 2 Installation Preparation

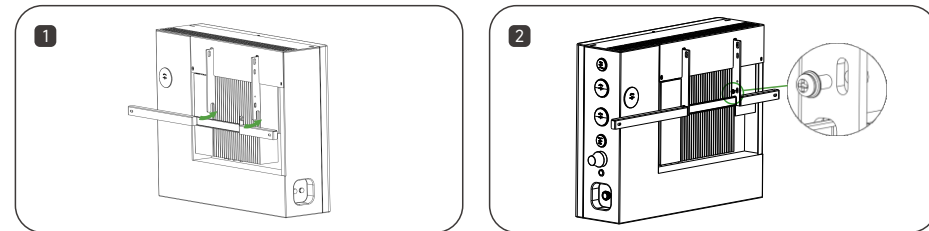
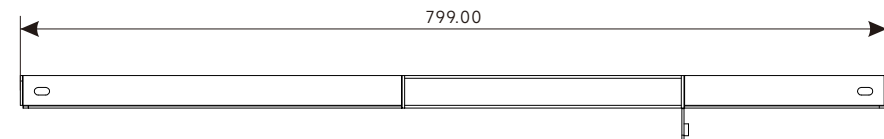
### Installation Environment Requirements



## 3 ALL-IN-ONE Installation

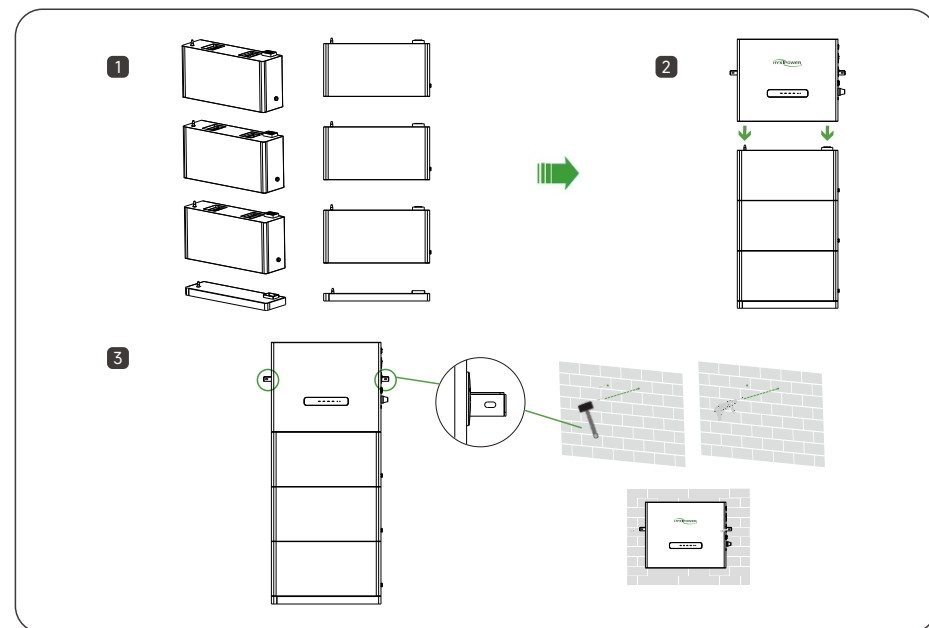
### Backplane bracket installation

- Step 1: Insert the backplane bracket into the corresponding slot on the inverter module.
- Step 2: Secure the backplane bracket to the inverter module with M6 screws.



### 3.1 Please select one of the “hard-floor mounted” or “soft-floor mounted” Hard-floor mounted Installation Steps

- Step 1: Stacking the pack on the base.
- Step 2: Stacking the inverter module on the pack.
- Step 3: Mark the inverter bracket's two expansion screw holes on the wall, remove the inverter module to drive expansion screws into the wall.
- Step 4: Move back the inverter module, bolting the inverter to the wall with “M6 bracket expansion screws”. (No need to fix inverter module on structural beam. The backplane bracket is only to prevent tipping, it is not a stress point.)

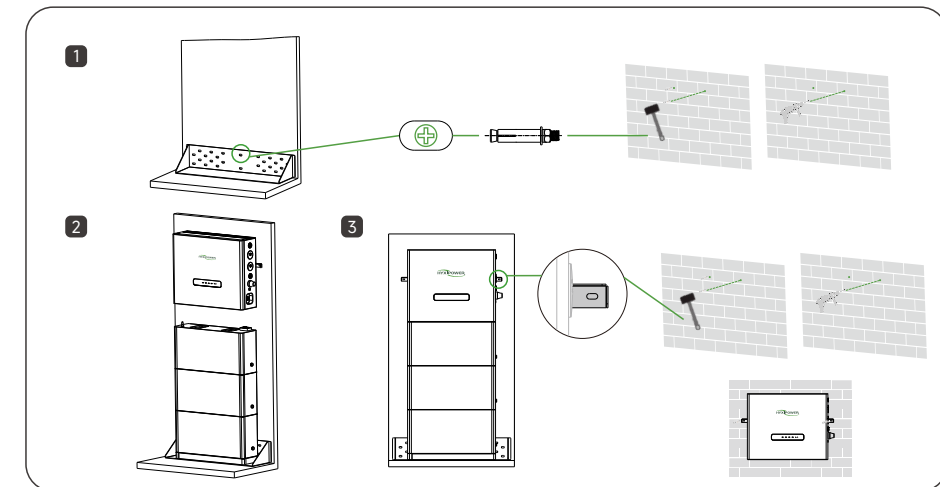


## Soft-floor mounted Installation Steps

(Requires purchase of additional soft-floor mounted base)

Soft-floor mounted installation for soft ground, please make sure that the soft-floor mounted base is attached to the ground and supported by the floor, the soft-floor mounted base is only intended for soft surfaces such as grass or mud, but still needs to be supported by the floor.

- Step 1: Secure the soft-floor mounted base with “M12\*70 expansion screws”. Please make sure that the expansion screws are driven into the load-bearing studs of the wall. Then place the base that comes standard in the all-in-one package on the soft-floor mounted base.
- Step 2: Stacking the pack on the base. Then stacking the inverter module on the pack.
- Step 3: Mark the inverter bracket's two expansion screw holes on the wall, remove the inverter module to drive expansion screws into the wall. Move back the inverter module, bolting the inverter to the wall with “M6 bracket expansion screws”. (No need to fix inverter module on structural beam. The backplane bracket is only to prevent tipping, it is not a stress point.)



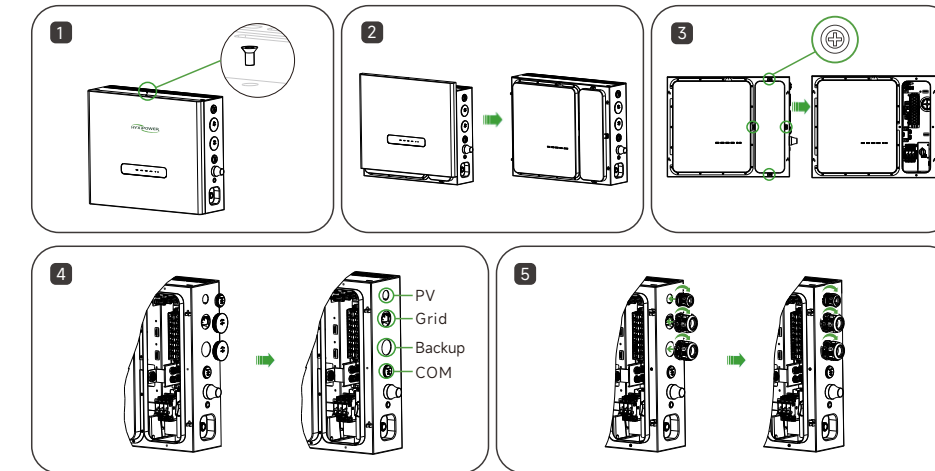
### NOTES

The battery base (in inverter package) must be installed, otherwise the battery cannot form a circuit.

## 4 Electrical Connection

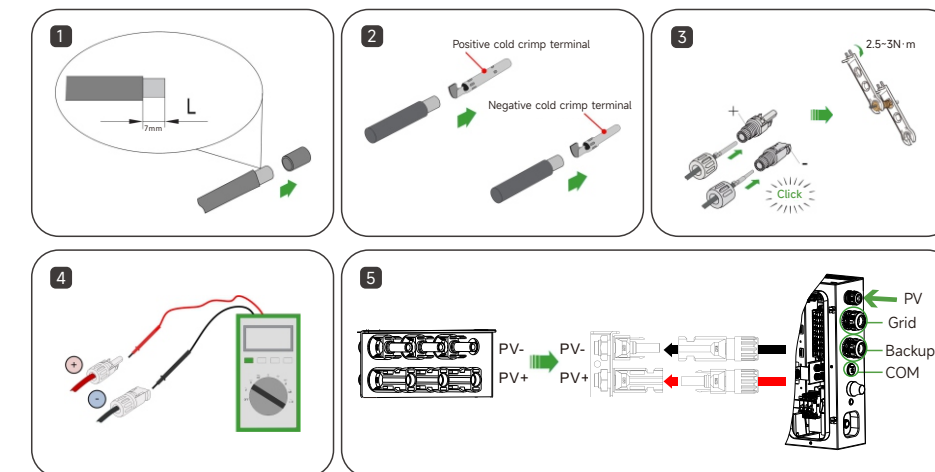
### 4.1 Electrical Connection Preparation

- Step 1: Remove the M3\*8 screws from the top of the inverter module.
- Step 2: Lift the inverter module cover from the upper end.
- Step 3: Remove the 4xM6 screws from the wiring compartment cover.
- Step 4: Unscrew top 3 protective casing.
- Step 5: Screw the waterproof cable gland to the corresponding position



### 4.2 PV Side Connection

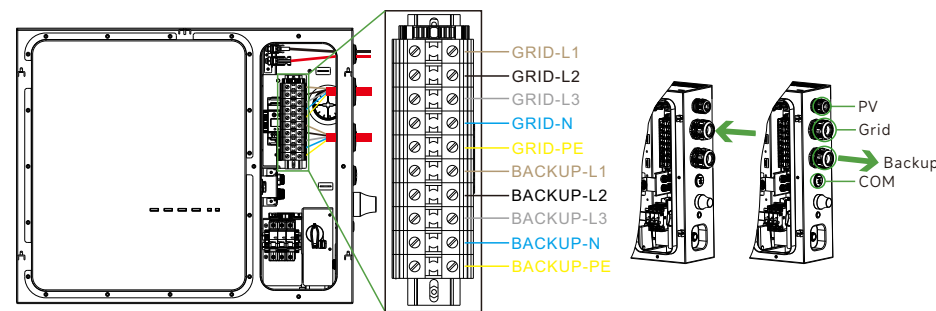
- Step 1: Strip off the insulation layer of all DC cables by about 7mm.
- Step 2: Use crimping pliers to bundle the cable ends at the wiring terminals.
- Step 3: Pass the cable through the cable gland, insert the insulating sleeve and fasten it. Gently pull the cable to ensure that it is connected and fastened. Use a force of 2.5-3N·m to tighten the gland and insulating sleeve.
- Step 4: Use a multi-meter to check and confirm that the polarity of the photovoltaic string connecting cable is correct.
- Step 5: Connect the PV connectors to the corresponding terminals until a click is heard.



### NOTES

PV2 and PV3 share one MPPT

### 4.3 Please select one of the following "4.3.1 New Installation" or "4.3.2 Classic Installation".



Terminal Layout

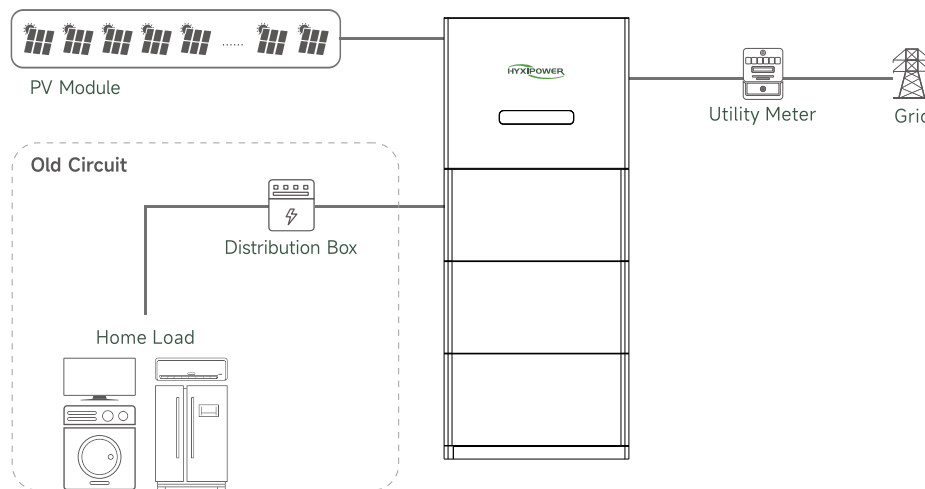
#### NOTES

Upper limit of GRID\_L1/L2/L3 & BACKUP\_L1/L2/L3: 63A per phase

#### 4.3.1 New Installation

System	HYX-H6K-HTA (2BAT)	HYX-H9K-HTA (3BAT)	HYX-H12K-HTA (4BAT)	HYX-H15K-HTA (5BAT)
PV cable (copper)	4-6mm <sup>2</sup>	4-6mm <sup>2</sup>	4-6mm <sup>2</sup>	4-6mm <sup>2</sup>
AC cable (copper)	Original Service Line(max 63A per phase)			
Backup cable (copper)	Original Service Line(max 63A per phase)			
Micro-Breaker	80A	80A	80A	80A

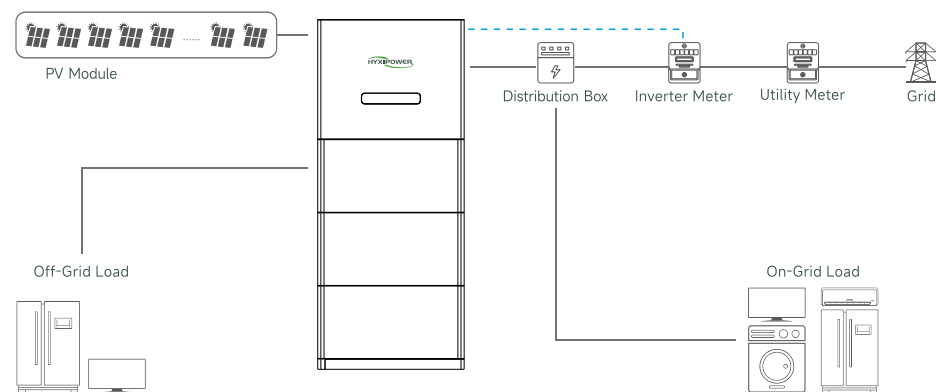
- Step 1: After disconnecting the power supply, take the GRID cable from GRID service entrance(AFTER utility meter), through the conduit entry hole of GRID.
- Step 2: Strip the five-core AC cable(L1/L2/L3/N/PE), and use hydraulic crimping tool to crimp each copper core together with a crimp terminal(25mm<sup>2</sup>), then connect them to the terminal chamber.
- Step 3: Strip the five-core BACKUP cable(L1/L2/L3/N/PE), and use hydraulic crimping tool to crimp each copper core together with a crimp terminal(25mm<sup>2</sup>), then connect them to the terminal chamber.
- Step 4: Take the BACKUP cable through the conduit entry hole of BACKUP. Connect the BACKUP cable to the main distribution box.



### 4.3.2 Classic Installation

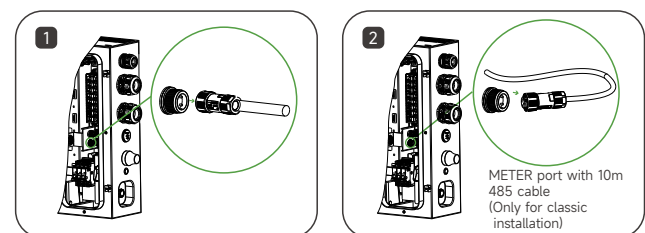
System	HYX-H6K-HTA (2BAT)	HYX-H9K-HTA (3BAT)	HYX-H12K-HTA (4BAT)	HYX-H15K-HTA (5BAT)
PV cable (copper)	4-6mm <sup>2</sup>	4-6mm <sup>2</sup>	4-6mm <sup>2</sup>	4-6mm <sup>2</sup>
AC cable (copper)	4-6mm <sup>2</sup>	4-6mm <sup>2</sup>	4-6mm <sup>2</sup>	4-6mm <sup>2</sup>
Backup cable (copper)	4-6mm <sup>2</sup>	4-6mm <sup>2</sup>	4-6mm <sup>2</sup>	4-6mm <sup>2</sup>
Micro-Breaker	30A	40A	50A	50A

- Step 1: After disconnecting the power supply, take the GRID cable from main distribution box, through the conduit entry hole of GRID.
- Step 2: Strip the five-core AC cable(L1/L2/L3/N/PE), and use hydraulic crimping tool to crimp each copper core together with a crimp terminal(25mm<sup>2</sup>), then connect them to the terminal chamber.
- Step 3: Strip the five-core BACKUP cable(L1/L2/L3/N/PE), and use hydraulic crimping tool to crimp each copper core together with a crimp terminal(25mm<sup>2</sup>), then connect them to the terminal chamber.
- Step 4: Take the BACKUP cable through the conduit entry hole of BACKUP. Connect the BACKUP cable to the sub distribution box of off-grid load.



#### Classic Installation Require Meter Connection

- Step 1: Unplug the inverter meter port terminal that is already occupied. The disconnected terminal can simply be left idle.
- Step 2: Plug the 10m meter cable terminal supplied in the package into the meter port.



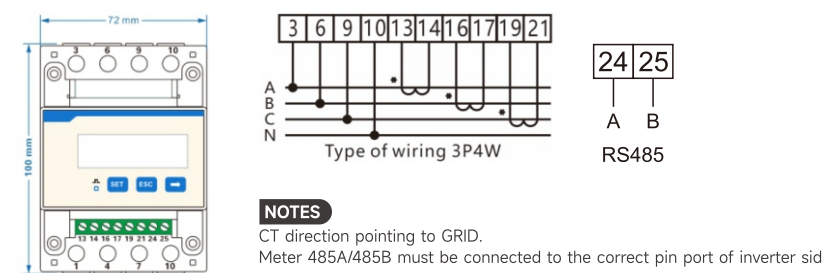
Inverter METER port	1	2	3	4
Smart Meter Side	485A	485B	(Reserved dry contact)	(Reserved dry contact)

#### NOTES

The official version does not require the customer to operate dotted steps.

Step 3: Connect the other end of the bare 485 cable to the meter in the following way and install the meter on the grid side

For more details please refer to the manual in the meter package.



#### NOTES

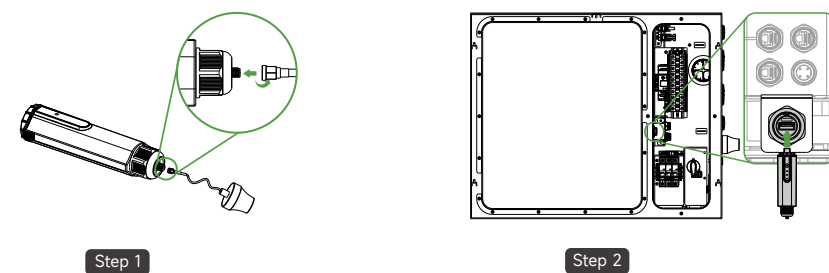
CT direction pointing to GRID.  
Meter 485A/485B must be connected to the correct pin port of inverter side.

### 5 Communication Connection

Please select one of the following "WIFI module" or "4G module".

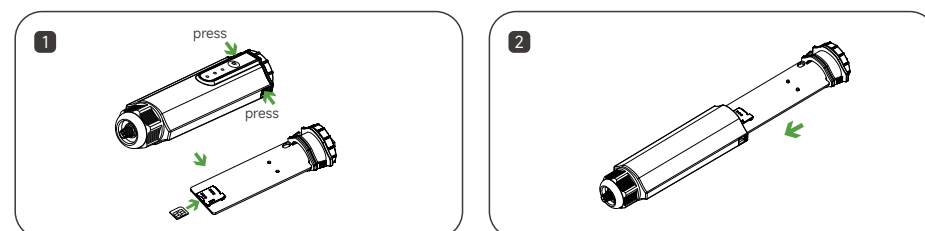
#### WIFI module

- Step 1: Connecting the tail end of the DCS to the head of the antenna.
- Step 2: Insert DCS into the DONGLE terminal and tighten it to ensure it is secure.



#### 4G module

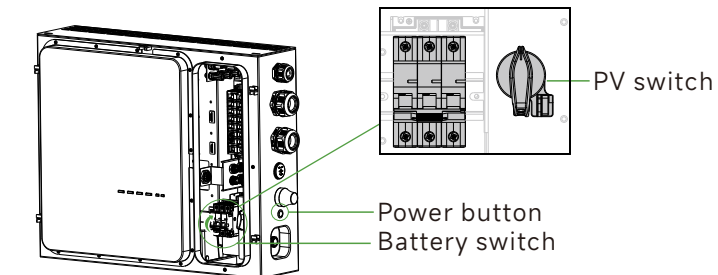
- Step 1: Remove the protective cover of DCS and insert the SIM card.
- Step 2: Install the waterproof cover of DCS.
- Step 3: Connecting the tail end of the DCS to the head of the antenna.
- Step 4: Insert DCS into the DONGLE terminal and tighten it to ensure it is secure.



\* Step 3 and step 4 are the same as the DCS wifi module

### 6 Wiring Completion and System Start-up

After completing all wiring connection, turn the battery switch and PV switch on and cover all covers. Long press the power button more than 3s until hear "click". System startup.



### 7 LED Indicator

No.	Name	Status	Indicator
1	SOC Green	Capacity	—————
2	WORK Green	ON-GRID	ON
		OFF-GRID	On 0.5s, off 0.5s
		Standby	On 0.5s, off 1.5s
3	ALARM Red	Shutdown	OFF
		Normal	Off
		Self-Recovery Alarm (external)	On 0.5s, off 1.5s
		Self-Recovery Alarm (device)	On 0.5s, off 0.5s
		Error	On

### 8 System Commissioning

#### 8.1 Installing the App

**Method 1**  
Download the "HYXIPOWER APP" from the app store:

- App Store (IOS)
- Google Play

**Method 2**  
Scan the QR code and download the APP:



App Download

#### 8.2 App Quick Guide

For more information on using the HYXIPOWER APP, please scan the QR code.



App Quick Guide